



Pod Installation:

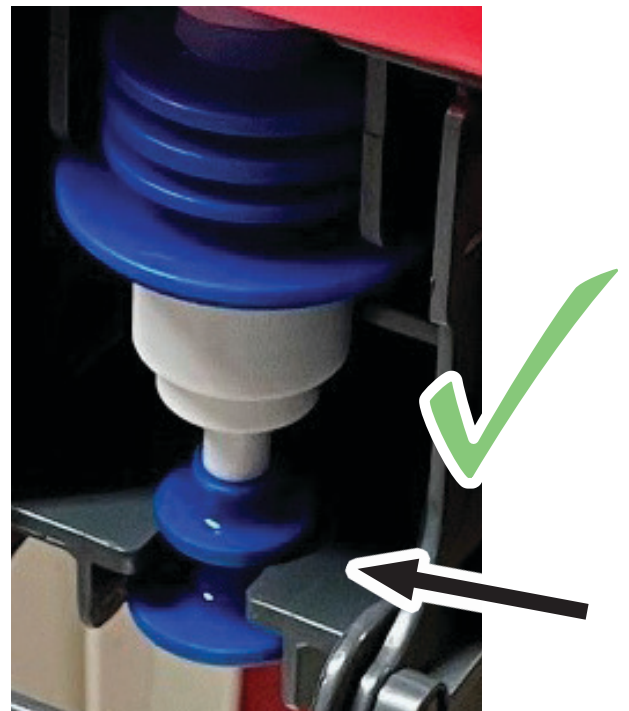
The pod should slot into the allowed space quite neatly.

Image on the left shows a pod sitting neatly and correctly in the dispenser. See below for closeups.

A quick and effective way of checking if the pod is in the dispenser properly before closing it back up is to check the positioning of the end of the pump. (See below)



Incorrect. The Blue section is entirely beneath the Grey section.



Correct. The Blue section is slotted between the Grey section.



Closing The Dispenser I:

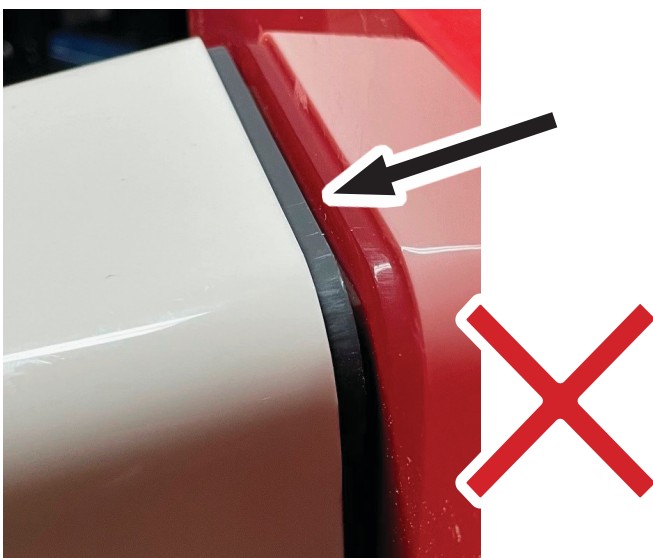
There are two steps to closing the dispenser completely.

First, take note of the small **PRONGS** on the inside of the cover. There are two on each side, (though you can only see two in the picture).

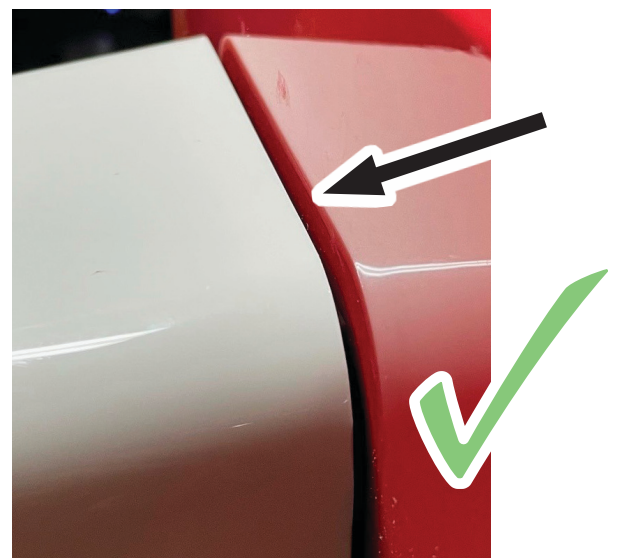
When the cover is closed, the **PRONGS** sit into the **CATCHES**. Again, there are two on each side.

Pressing the cover so far will only engage the first of two Prong/Catch pairings; you must push further until you hear a hefty '**CLUNK**'. This sound means the dispenser is closed properly.

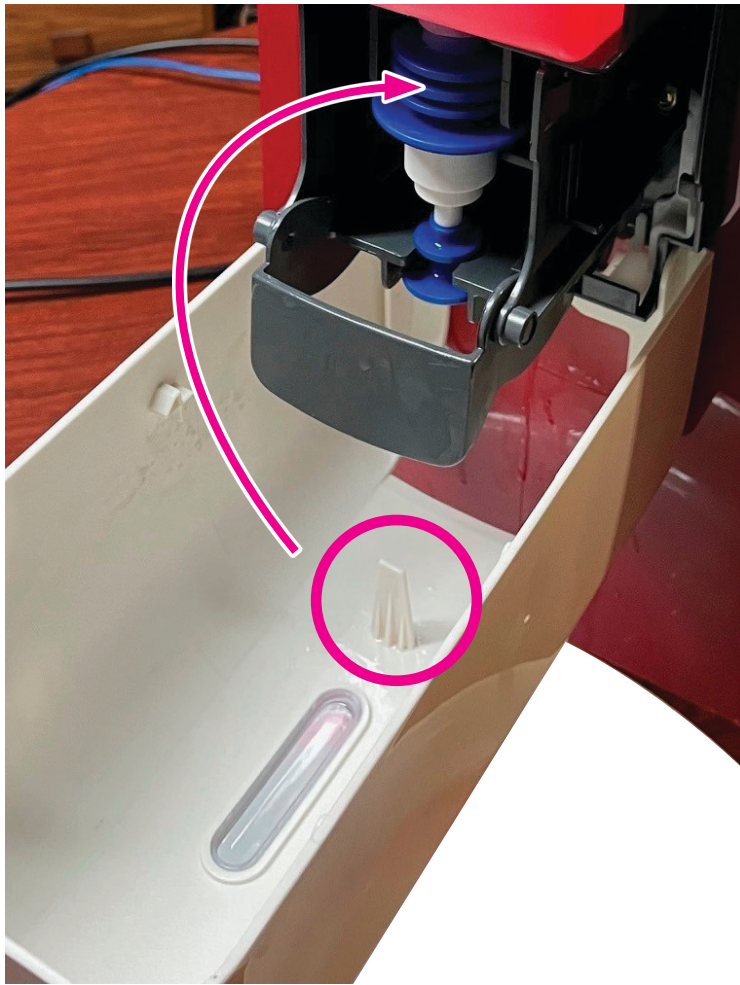
A quick and effective way of checking if the dispenser is fully closed or not is to check the top of it. If it is partially closed, you can still see some of the grey backboard, whereas if it is completely closed, you cannot see the grey backboard.



Incorrect. While the cover may stay on, it is not fully closed or secured; you can still see the grey backboard.



Correct. You cannot see any of the grey backboard. This means the cover has been closed completely.



Closing The Dispenser II:

There is a piece of reinforced plastic on the lower part of the inner cover, which we will refer to as a **PEG**.

When the dispenser is closed properly, and the pod is inserted correctly, this **PEG** will press against this large Blue part of the Pod. This keeps the pod secured and in place while the dispenser is used/operated.

If either the Pod is inserted incorrectly, or the dispenser is not closed properly, when someone tries to operate the dispenser button/lever, the Pod will slip from its place, rendering the dispenser temporarily unusable.

The only way to fix this slip/error, is to completely reset and try again: open the dispenser, remove the Pod, load the Pod back into place, close the dispenser until you hear the 'Clunk', and try again. (See 'Closing The Dispenser I' for more detail.)



Close-Up Of Correct Setup:

For illustrative purposes, holes have been cut into the front cover of the dispenser. This is so we can see the **PEG** engaged and actively holding the pod in place while the cover is closed.



This is a close-up of the inside of the dispenser, with the lid closed. This dispenser has been correctly set up.

We can see the **PEG** is now pressed against the Blue part of the Pod's Pump. The **PEG** is supposed to sit this way to help keep the pod secured while the dispenser is operated.

It is worth noting that the **PEG** should NOT sit in *between* the ridges of the Blue plastic, but rather pushed against the outermost edge, as it is in the picture.