



# Technical Bulletin



## WALL CLEAN

### Wash Bay + Tunnel Wall Cleaner

#### Product Description:

WALL CLEAN is a heavy-duty readily biodegradable, acid based cleaner formulated for use on detergent & wax scum build up on walls, equipment & windows. Wall Clean has made the once dreaded task of cleaning car wash walls a simple and easy job. Just spray Wall Clean on and pressure rinse off. Wall Clean, cleans fiberglass, brick, block, and painted walls. With clean bay walls you will attract more business!

#### Application:

Carwash walls get so dirty because of a combination of factors. The cars come in soiled with road grime, oil, dirt, etc. The high-pressure gun used in the carwash blows this road grime off of the car and onto the walls. The road grime that is now on the wall is mixed with surfactants, oils and hard water scale minerals. This cocktail is allowed to dry on the wall. After several days of this cycle your carwash ends up with a hard water/dried soap coating several layers thick. The only way to remove this coating is with a specialized acidic detergent such as Wall Clean.

Take a 2.4 mt dry section of the wall. Using a pump-up sprayer filled with properly diluted Wall Clean, spray the Wall Clean mix from the bottom of the wall moving upward. By starting at the bottom of the wall and moving upward you will eliminate streaking. Allow the detergent to dwell on the wall for 10-15 seconds ONLY. Using a power washer or the high-pressure rinse gun in the wash bay, of at least a 1000psi start spraying the wall with water. Remember to keep the nozzle only 50mm-75mm (2-3 inches) from the wall to get maximum power from the power washer. The wall should be clean now. If you come across a stubborn spot reapply a second application of cleaner and agitate with a stiff bristled brush. Always wear safety glasses, rubber boots, and rubber gloves when handling chemical detergents.

#### Dilution

Frequency of cleaning & type of soil/scale build up will determine the dilution required to complete the task effectively & efficiently. A dilution of 1:4 for best results on heavy build up to 1:8 for regular cleaning will get results for most car wash sites.

#### PPE & Safety

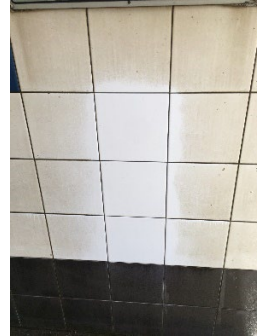
Be sure to follow the SDS & use the required PPE of eye protection, gloves & an apron or wet weather pants & coat.



**Before**

**After**

- Tyre and wheel cleaning system at Auto Carwash



Code: 33149

**SHELF LIFE:** As a quality assured manufacturer, Castle Chemicals has a stringent Quality assurance programme. As part of this regime, the label on this product shows a batch number and date of manufacture. This product has a shelf life of 24 months from the label printed date of manufacture. This information contained herein is based on data considered accurate. However, no warranty is expressed or implied regarding the accuracy of these data or the results to be obtained from the use thereof. Castle Chemicals assumes no responsibility for personal injury or property damage to vendees, users or third parties caused by the material. Such vendees or users assume all risks associated with the use of material.