

Bio Enzyme Range

GREEN-PRO BIOZYME: Trap & Drain Treatment

A concentrated, biological waste water treatment that contains a unique blend of specialised microorganisms and enzymes that have been developed specially to liquefy and digest fats, oils, greases and complex proteins. Contains over 98 billion micro organisms per litre..

#22952 pH 7.25-8.25

GREEN-PRO CIPZYME: Trap & Drain Treatment

A 'low-impact', biodegradable, lowfoaming CIP liquid for the food and beverage industry. Formulated with a mild, non-caustic alkali and enzymes; Cipzyme provides thorough cleaning capability, easy rinsing and minimal impact on the environment. The enzymes and low-foam surfactants combine to provide the active force to attack food soils, fats and proteinaceous staining, breaking these matrices and quickly removing them from the system. #22953 pH 8.25-10.25

GREEN-PRO COMPLETE - Sanitising & Softening Multi Enzyme Laundry Powder

Sanitising and softening multi-enzyme laundry powder. Concentrated commercial application biodegradable laundry powder. Low sudsing surfactants, optical brighteners, soil suspending agents, activated colour safe bleach for improved brightness & stain removal plus a proven multi enzyme mix to assist in removing fats, blood, grass, lipstick & food stains on all fibre types. Proven sanitising in cold water washing, PLUS fabric softening & residual fragrance.

#22967 pH 10.5-11.5

GREEN-PRO DEEPCLEAN: No Rinse Floor Cleaner

A no-rinse, residual floor cleaner that provides two phases of cleaning. In the first phase, immediate cleaning is achieved with the naturally-sourced surfactant combination to effectively remove the majority of dirt and food oils from the floor surface. In the second phase, the combination of Bacillus bacterial-producing Lipase, protease and amylase enzymes continue to degrade remaining residues in inaccessible areas such as corners, grout and cervices. #22954 pH 9.25-10.25

How does
Bio enzyme's
work?

GREEN-PRO ELIMINATE - Enzyme Detergent Deodouriser

Developed as a specific detergent deodouriser blend containing a selected blend of synthetic enzymes, pleasant fragrance, surfactant and penetrating wetting agents. The unique enzymatic activity of the detergent deodouriser allows for quick penetration, digestion, and removal of the toughest urine soils and odours. Restrooms and bathroom areas will often have a build up of urine in the tile & grout. When mopped over with a cleaning solution the uric acid is "activated" and a strong urine odour occurs. Does not contain any hazardous chemicals or any undesirable pathogens such as salmonella or pseudomonas. The blend of enzymes present is able to break down and digest tough urine problems and stains.

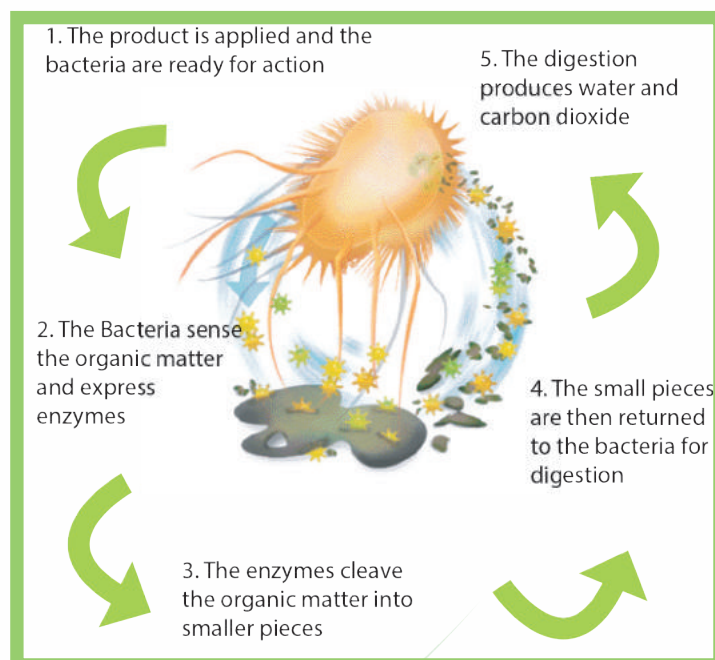
#22597 pH 7.5-8.5

GREEN-PRO FADE AWAY - Bio-Enzymatic laundry Spotter

A concentrated laundry spotter and wash additive. The unique enzymatic activity of Fade Away Enzyme Spotter allows for quick penetration, digestion, and removal of the toughest stains and soils. Utilize the product Enzyme Spotter allows for the quick removal of many types of stains particularly protein, starch, and manann gum based stains. #22958 pH 7-8

GREEN-PRO ODOURZYME - Urine Digester

Urine digester containing selected strains of natural bacillus bacteria, enzyme cultures, an odour neutraliser and penetrating wetting agents, allowing for quick removal of the toughest urine stains and soils. The application of Odourzyme to the floors, urinals and toilets after cleaning will eliminate the uric acid, which causes the urine odour. #22962 pH 7-8



castle

cc

'Solutions, Chemistry, Service'



GreenPro

environmentally responsible solutions

Product Range



Castle Chemicals Commitment

Castle is committed to providing greener cleaning alternatives across all industries, including housekeeping, food service and manufacturing, laundry, and home maintenance.

Green Pro products are formulated to meet or exceed third-party, independent industry bodies' accreditation, signifying the intent and execution of environmentally friendly chemical manufacturing, usage, and waste products. Castle's Green Pro range will display the Accord rECOgnised logo to signify our accreditation with this key industry body.

About Green Pro

Environmentally responsible chemistry

Formulated with renewable, plant-based resources

Meet local and international biodegradability standards

Various different products rECOgnised by Accord, and a number of products listed in the NSW and Victorian Local Government's Sustainable Choice and EcoBuy preferred supplier registry

About Castle

Castle is an Australian owned and operated manufacturer in operation since 1972. We are market leaders across numerous industries, and we are represented by our team of expert chemists, advisors and sales team across Australia and New Zealand.

castle

cc

CASTLE CHEMICALS

16 Rural Drive Sandgate NSW 2304 | Ph: 02 4014 5555 | Fax: 02 4968 4883

ccsales@castlechem.com.au | www.castlechem.com.au



castle

cc

CASTLE CHEMICALS

16 Rural Drive Sandgate NSW 2304 | Ph: 02 4014 5555 | Fax: 02 4968 4883

ccsales@castlechem.com.au | www.castlechem.com.au



GreenPro

environmentally responsible solutions



RECOgnised: Environmental Credentials Scheme for Commercial Cleaning Products

Accord Australasia is the national industry association for the Australasian hygiene, cosmetic and specialty products industry. Their criteria, designed and audited by expert chemists and toxicologists, represent the 'Environmental Credentials Scheme' – a scheme designed to recognise environmentally responsible performance, formulation and disposal among applicants.

Castle's Green Pro meet or exceed these criteria, signified by the ACCORD rECognised icon on the product labels.

In addition, a number of Green Pro products have been accepted by the local Government NSW and the NSW Office of Environment and Heritage Partnership, adhering to the Sustainable Choice program's environmental protection guidelines. In Victoria, numerous Green Pro products are accepted and promoted by Eco Buy.

At Castle Chemicals, we are committed to ensuring that we fulfill the requirements of applicable Australian and International Standards, and we are guided by our company's environmental policy and principles and guidelines of AS/NZS ISO14001:2004 – Environmental Management System.

To achieve our environmental goals, we adhere to the principle of continual improvement and prevention of pollution. We have developed a framework to ensure our activities and services comply with all applicable environmental standards, and contribute to the well-being of the communities in which we operate.

Our Environmental Objectives

Consider our environmental responsibilities in all stages of product formulation, manufacture, filling and delivery, including plant design, operation, production and packaging.

- Optimize the recycling and minimisation of production waste materials and packaging.
- Monitor, evaluate and wherever possible reduce energy and water consumption.
- Monitor and evaluate our environmental initiatives through internal and external audits.
- Review our activities to develop objectives and targets to minimize the impact of the business on the local environment and develop appropriate programs to achieve these objectives.
- Optimize the use of biodegradable formulations and raw materials.
- Maximise use of recycled / recyclable packaging in product production.
- Formulate highly concentrated products / powders to minimise transport of water.
- Control product usage for our customers through the installation of automatic dispensing systems.

Kitchen and Food Service

GREEN-PRO RINSE ALL - Food Service Rinse Aid

Concentrated super-wetting agent, which enables glassware, dishes and utensils to dry thoroughly and quickly without spotting or streaking. It is designed to be applied in the rinse cycle of automatic dish washer. #22963 pH 8.5-9.5

GREEN-PRO STAINLESS STEEL - Cleaner and Polisher

An economical and non-flamable bio-based product that can replace many common petrochemical-based products. It contains no acids, water, silicones or abrasives. #22950 pH N/A

GREEN-PRO SUPERGREEN - Concentrated Manual Dish Wash Detergent

a food-grade manual dishwashing liquid. Its properties include super grease-cutting surfactants with a neutral pH and a 'no compromise' formulation. #22966 pH 7.5-8.5

GREEN-PRO D-LIME - Kitchen Descaler

a non-acidic, non-hazardous kitchen descaler, for use in kitchen areas for removal of lime scale deposits in dishwashing machines, urns, kettles and bain maries. #22956 pH 0-1

GREEN-PRO FRONTIER - Food Service Sanitiser

Free-rinsing hard surfaces sanitiser for use in food preparation and service areas where there is a requirement for high standards of sanitation for food contact surfaces. GREEN-PRO FRONTIER is formulated to be used as a spray and wipe on all non-porous surfaces. It is quick-drying and doesn't leave spotting or streaking once dried. #22923 pH 6.5-7.5

GREEN-PRO DISHKLEEN - Food Service Auto Dishwash Detergent

Odourless, very alkaline liquid. It is a carefully balanced blend of low-foaming cleaners, alkalis, and water softening agents, and is readily miscible with water. #24113 pH 13-14

GREEN-PRO D2000 - Premium Warewash Detergent

powdered ware-wash detergent. It excels on crockery, glassware, pots and pans. It is formulated to actively inhibit scaling of dishwashers, thus reducing descaling frequency. Alkaline, and 100% active - no fillers. Controlled foam - sufficient surfactants to improve cleaning. Suitable for all hard and soft water areas. #22988 pH 13-14

Housekeeping and Restroom

GREEN-PRO COMPLETE - Multi-Enzyme Laundry Powder

A concentrated commercial application biodegradable laundry powder. Low sudsing surfactants, optical brighteners, soil suspending agents, activated colour safe bleach for improved brightness & stain removal plus a proven multi enzyme mix to assist in removing fats, blood, grass, lipstick & food stains on all fibre types. Proven sanitising in cold water washing, PLUS fabric softening & residual fragrance. #22967 pH 10.5-11.5

GREEN-PRO BATHROOM CLEANER - Wall & Floor Tile Cleaner

An economical, non-hazardous, bio-based, environmentally-sound product that can replace many common aggressive, acidic, hazardous bathroom cleaning products. #22951 pH 0-1

GREEN-PRO FADE AWAY - Bio-Enzymatic laundry spotter

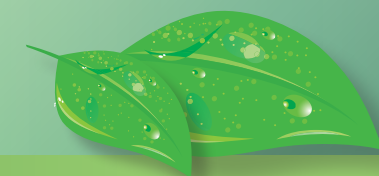
A concentrated laundry spotter and wash additive. The unique enzymatic activity of Fade Away Enzyme Spotter allows for quick penetration, digestion, and removal of the toughest stains and soils. Utilize the product Enzyme Spotter allows for the quick removal of many types of stains particularly protein, starch, and manann gum based stains. #22958 pH 7-8

GREEN PRO GENT-L - Washroom Liquid Soap

Hand, hair and body wash that cleans, protects and moisturises the skin and possesses a perfume that leaves a light fragrance on the hands. It contains glycerine and natural ingredients to soften the skin, so hands feel fresh and soft after washing. #20143 pH 5.5-5.5

GREEN PRO RADICAL - Laundry Powder

An economical, white, medium-granular, low-bulk density detergent. Surfactant blend, optical brightener and a very popular 'fresh linen' fragrance. #22963 pH 11.5-12.5



CASTLE CHEMICALS

16 Rural Drive Sandgate NSW 2304 | Ph: 02 4014 5555 | Fax: 02 4968 4883

ccsales@castlechem.com.au | www.castlechem.com.au

