



*'Partners in Vehicle Care'*

# APRIL/MAY 2015 SPECIALS

**MENTION THIS BROCHURE  
FOR A FURTHER 10% OFF**  
ALL PRICES EXCLUDE GST AND FREIGHT

## VEHICLE CARE



### PRIME MOVER

High-foam truck and trailer wash

**25L \$75**

### NEW BRIGHT

Car and truck shampoo & wax

**25L \$95**

### MEAN GREEN

All-purpose car & truck shampoo

**25L \$75**

### PROCLEAN MONSTER

Economy-grade car and truck shampoo

**15L \$50**

### HI-BEAM

Ready-to-use, silicone-based tyre and bumper finish

**20L \$165**

### RENEW ALL

Vinyl protection and reviver

**25L \$205**

### TYRE SLICK

Non-silicone tyre and trimmings care

**25L \$90**

### AUTO CLEAR

Vehicle glass cleaner

**25L \$80**

### PROCLEAN IMAGE

Economy-grade glass cleaner

**15L \$40**

**WE ALSO SUPPLY SPONGES, BUCKETS, FOAMERS,  
SPRAY BOTTLES AND TRIGGERS. ASK US TODAY!**



## CASTLE CHEMICALS

16 Rural Drive Sangate NSW 2304 | Ph: 02 4014 5555 | Fax: 02 4968 4883

[ccsales@castlechem.com.au](mailto:ccsales@castlechem.com.au) | [www.castlechem.com.au](http://www.castlechem.com.au) | [www.castlechem.com.au](http://www.castlechem.com.au)



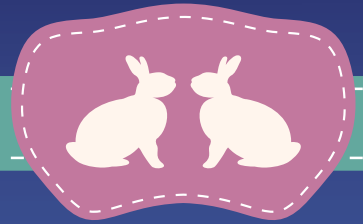
*'Partners in Vehicle Care'*

**APRIL/MAY 2015  
SPECIALS**

**20% OFF THE ENTIRE AQUASHINE  
25L RANGE FOR APRIL/MAY ONLY!**

ALL PRICES EXCLUDE GST AND FREIGHT

## AQUASHINE



Aquashine is Castle Chemicals' flagship vehicle care range, specially designed for automatic vehicle washes and self-service car wash equipment.

**20% OFF THE ENTIRE AQUASHINE 25L RANGE  
FOR APRIL/MAY ONLY!**

<b>S1</b>	Self-serve car wash pre-treatment
<b>S2</b>	Self-serve car wash tyre and engine cleaner
<b>S3</b>	Self-serve car wash pressure wash
<b>S4</b>	Self-serve pink foaming brush wash
<b>A1</b>	Auto brush-wash foam detergent
<b>A2</b>	Auto brush-wash low-foam car shampoo
<b>A4</b>	Non-silicone rinse gloss
<b>PRG</b>	Premium, silicone-based rinse gloss & drying aid
<b>PSC</b>	Premium, silicone-based shine and conditioner
<b>Aquashock FST</b>	Touchfree, heavy-duty foaming alkaline detergent
<b>Aquashine Fragrances</b>	Available in Spring Floral, New Car and Tropical Vanilla.

**ASK US TODAY ABOUT WHAT THE AQUASHINE  
RANGE CAN DO FOR YOUR OPERATIONS!**



**CASTLE CHEMICALS**

16 Rural Drive Sangate NSW 2304 | Ph: 02 4014 5555 | Fax: 02 4968 4883

[ccsales@castlechem.com.au](mailto:ccsales@castlechem.com.au) | [www.castlechem.com.au](http://www.castlechem.com.au) | [www.castlechem.com.au](http://www.castlechem.com.au)